

Everything you need to know about your child starting school at Moorlands Schools Federation

Moorlands Schools Federation is a member of The Partnership Trust (www.thepartnershiptrust.co.uk), which is a multi-academy trust.



We're pleased to meet you!

Moorlands Schools Federation comprises two community schools, Moorlands Infant School and Moorlands Junior School. We believe our schools are very special places for learners of all ages. Our Federation occupies a green and leafy learning site in the city of Bath. We offer children who come to our schools a vibrant, friendly, fun and purposeful community where they can experience our vision of “space to grow for any tomorrow.”

At Moorlands Schools Federation, we pride ourselves on developing high quality relationships and take our responsibility for educating children very seriously. With a team of enthusiastic, hardworking and skilled staff and governors we focus on developing the ‘whole child’. We feel privileged to be involved in the lives of the children that come to our schools and work hard to ensure that all children are given the widest range of opportunities possible.

Learning is at the heart of all we do so that our children develop the personal, social and emotional qualities as well as all the knowledge and skills they will need, not only now but also for the rest of their lives. At Moorlands, we encourage the children to think about what their contribution will be in the world and how they will try to make a difference as responsible and engaged members of the schools’ community, as well as citizens of the world.

We hope you find this pack answers your questions but if you would like further information, please do contact us.

Kind regards,
Miss Louisa Sellars
Executive Head Teacher

What does it mean to be a federated school?

A federation is where a number of schools come together under one governing body. The schools' individual governing bodies are disbanded and a new single over-arching governing body is formed. This becomes the accountable body for all the schools and sets the strategic direction for the group. In practical terms, our federation operates similarly to a primary school and the only difference for families between a standard primary school and our schools is that in Year 2 you must apply to attend the Junior School.

Our academy status...

Moorlands Schools Federation joined The Partnership Trust in 2017. The Trust is a multi-academy trust and is committed to providing an outstanding education for all their pupils by focusing on every child and their individual progress and attainment.

Through Fosse Way School, the Trust is designated as a National Support School, a Teaching School and Sponsor School. These designations enable the Trust to provide high quality professional development and support to more than 100 schools across the region.

More information about the Trust can be found on their website:

thepartnershiptrust.co.uk

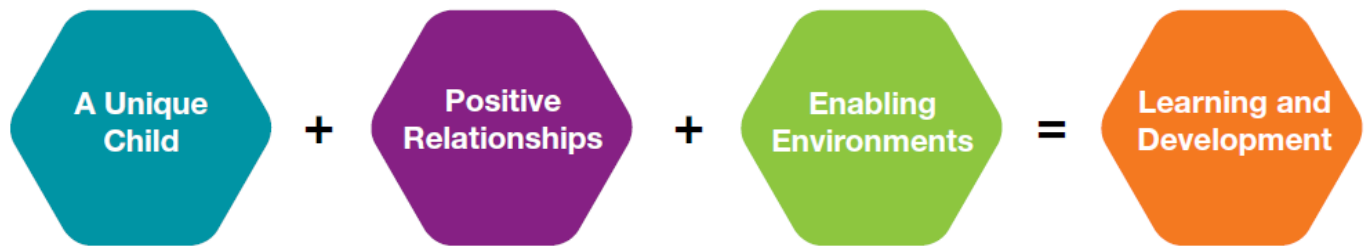


Early Years Foundation Stage Curriculum



The Early Years Foundation Stage (EYFS) is a framework for children from birth to the age of 5. Children in Foundation Stage (commonly known as Reception) at Moorlands Schools Federation are experiencing their final year of the Early Years Foundation Stage curriculum.

There are four themes that underpin the Early Years Foundation Stage Curriculum.



Learning and development

Your child will be learning skills, acquiring new knowledge and demonstrating their understanding through 7 areas of learning and development.

These are:

- ✓ Communication and Language
- ✓ Physical Development
- ✓ Personal, Social and Emotional Development
- ✓ Literacy
- ✓ Mathematics
- ✓ Understanding the World
- ✓ Expressive Arts and Design

These 7 areas of learning will underpin your child's education. At the end of the Foundation Stage, teachers will assess your child's attainment against the Early Learning Goals which are directly linked to the 7 areas of learning and development.

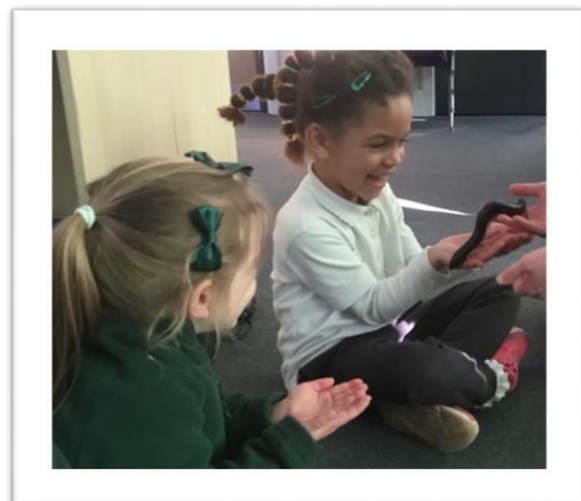
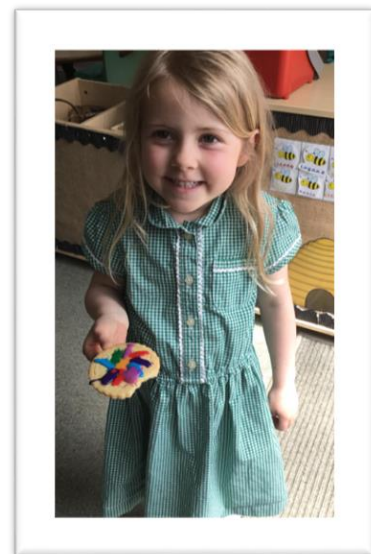
Key people and classes

Our reception classes are called Ladybirds and Bumblebees, each with two key people - a teacher and at least one teaching assistant.

Key people:

- are your first contact point for any questions about your child's experiences at school
- help ensure that your child's learning and care is tailored to meet his/her individual needs
- seek to engage and support parents and/or carers in guiding your child's development at home
- help you to engage with more specialist support, if appropriate

You will receive a postcard letting you know which class your child will be in. Our two classes work very closely together and spend most of their day using all areas of our shared space. Your child will get to know all the Early Years (Reception) staff very well and will be taught by each of them at some point during their first year at school.



Learning through play...

Play underpins the Early Years Foundation Stage and all aspects of children's development. Through play, children develop language skills, their emotions and creativity, social and intellectual skills.



For most children play is natural and spontaneous although some children may need extra guidance from adults.

Play takes place indoors and outdoors and it is in these different environments that children explore and discover their immediate world.

Children practise new ideas and skills, take risks, show imagination and solve problems on their own or with others.

The role that adults have is crucial. Adults provide time, space and resources. These might include clothes, boxes, buckets, blankets that will inspire play and fire children's imaginations.

Adults observe children's play and join in, watching and listening before intervening. They value play and provide safe but challenging environments that support and extend learning and development.

In addition to the wide range of play based opportunities planned by your child's class teacher, the children will also take part in small group activities at various times throughout the day.



Working together

Our primary aim is that your child is settled and happy at school. When parents/carers and teachers work together there is a positive impact on children's learning and development. Please do chat to staff at the end of the school day if you have any questions - often things are quickly sorted and queries answered.

Teachers will provide guidance on how you can support the development of your child's academic skills at home in their termly curriculum overviews and in some optional 'home learning' activities.

Whilst your child will practise reading regularly at school as part of our 'Reading Time', there is an expectation that all families will share books and stories frequently at home.



To help with school and home communication, we will also update our Class Dojo feed. This is an online platform (a free app); you will receive login details for this in September. On Class Dojo, you will find the latest news and photos of what the children have been learning. You can also message your class teacher if needed.

Special Educational Needs

If you know that your child has additional needs, please talk to your child's current setting to ensure that the correct information is passed onto us at school.

Please also make sure your child's class teacher is aware of your child's needs as part of their transition into school.

Class teachers will talk to you if they have any concerns about your child's development. All children typically require additional support for a range of different things, so it is not something to worry about if this happens.

Attendance

If your child cannot attend school, please notify the school by telephone on the first day of absence. If the school does not hear from a parent or carer by 9.30am, the office team will send a message or call for an absence reason.

Regular attendance at school is paramount for a child's learning journey. Please note that if your child has been suffering from sickness or diarrhoea, they need to remain off school for 48 hours after the last episode of sickness or diarrhoea.

The Department for Education guidance to schools states that leave should not be granted in term time unless exceptional circumstances apply, such as to attend the funeral of a close family relative. Under no circumstances will leave be authorised for family holiday during term time. Any requests for leave must be made in writing. A form for this purpose is available from the office.

Which forms do I need to return to school?

To help us ensure a smooth start for your child, please make sure you have completed the online 'Data Collection Pupil Registration Form' via MCAS (My Child at School).

We will need to see your child's birth certificate but **please leave this until September** (we need to see the original but you do not need to leave it with us).



When will your child start school?

Thursday 3rd and Friday 4th September <i>INSET DAYS (school closed to children)</i>	
<p>Monday 7th – Friday 11th September</p> <p>AM <u>OR</u> PM sessions</p> <p>Your child will attend school either in the morning OR afternoon for 1 week to enable a supportive transition into school in smaller groups.</p> <p>This will then change the following week, where your child will attend school with their whole class.</p>	<p><u>Half days - AM OR PM Sessions</u></p> <p>Children are put into 2 groups, group AM OR group PM as stated on your child's class letter.</p> <p><u>Mornings (8:35am-11:15am)</u></p> <p>GROUP BB AM - Children who are in Bumblebee class</p> <p>GROUP LB AM - Children in Ladybird class</p> <p><u>Afternoons (1:00pm-3:15pm)</u></p> <p>GROUP BB PM - Children in Bumblebee class</p> <p>GROUP LB PM - Children in Ladybird class</p>
<p>Monday 14th - Friday 18th September</p> <p>AM and Lunch Time</p> <p>Your child will attend school with their whole class and stay until after lunch time.</p>	<p><u>AM and Lunch Time</u></p> <p>Classroom doors are open from 8:35am</p> <p>All children should be in school no later than 8.45am. The register is taken at 8:55am.</p> <p>Pick up is at 1:30pm on the octagon playground.</p>
<p>Monday 21st September</p>	<p><u>Full time</u></p> <p>All children in school full time.</p> <p>School gates open at 8:35am and at 3:10pm.</p> <p>8:35am – 3:15pm</p>

Some quick answers...

Toys

Children should not bring toys or items from home to school as they can be easily lost or broken causing unnecessary upset. Sometimes, we may ask for things to be brought to school (for example a photo or a special object) and on those occasions we will provide somewhere safe to store them. If your child needs a small comforter when they start school, please let us know what they will bring. Their comforter will stay in their school book bag during their time at school.

Snacks

We are a 'healthy school' and children are given the choice of a free piece of fresh fruit or vegetable during the morning.



Your child can bring in a snack; in order to make this as simple as possible, we request that the snacks are a single piece of fruit or vegetable such as: apple, carrot, banana, orange, cucumber, tomatoes or peppers.

This is not an exhaustive list. However, it should hopefully identify the type of items that we think are appropriate to bring into school as a healthy snack. To clarify, morning snacks should not consist of anything that is in a wrapper e.g. breakfast bars, fruit winders, bear yoyos.

Children will also have milk during the morning which is provided free of charge until your child is 5 years old. Once your child reaches 5 years old you will receive notification directly from the milk service with an option to continue purchasing milk.

Water Bottles

Please send your child to school each day with a **clearly named bottle** filled with water. It is surprising how many children have the same water bottle so please make sure your child can easily identify their bottle. Your child will have free access to this throughout the day. **Please only fill the bottle with plain water.**

Allergies

We have a policy of no nuts in school. Please make sure we know if your child has any allergies on your child's online 'Data Collection Pupil Registration Form' via MCAS (My Child at School). We also have a separate allergy form from our outsourced caterer.

Birthday Treats

As there are children in school with allergies, we must ask that cakes and sweets are not brought in for birthdays or other occasions. Your child can wear their own home clothes to celebrate their birthday (or the school day nearest to their birthday).

Spare clothes

We recommend a spare pair of socks and pants and spare trousers or skirt (these can be kept in school, in case of accidents). Please put these labelled items in a labelled waterproof or plastic bag.

Please ensure that all items of clothing, including shoes, and other belongings have a name label. Unlabelled clothes waste an enormous amount of teaching time and cause a great deal of frustration to families.



Using the outdoor environment is an integral part of the children's learning in EYFS. We ask that all children bring in a pair of wellington boots, clearly named, which can remain in school. Painting aprons will **not** be needed as we provide them.

Book Bags

A book bag is essential from the day that your child starts school. Not only is it used to protect reading and library books when your child brings them home but also to send messages or letters from and to school.



Any correspondence for school can be put into the white post boxes located inside the classroom or handed to the school office. It would be helpful if you could also check your child's book bag daily as we may also use it to pass information to you.

Book bags should be clearly named and may have a keyring to help your child recognise their own book bag.

If you need to have a rucksack please make sure they are small and can be easily carried by your child.

ParentPay

ParentPay is used for parental consent and payment of school trips and events. You will be issued with a log-in during Term 1.

School times

The school day starts at 8:45am (doors and gates open at 8:35am) and our school day ends at 3:15pm (gates open at 3:10pm). For your child's safety we ask that you inform us of who will be collecting them if it is to be different from usual. Please call the office to let them know. Any alternative adults who collect will need a password that has been shared with the office before your child is released into their care, for safeguarding reasons.

Bringing your child to school

We value our partnership with parents /carers and encourage you to ensure your child is settled and happy as they start the school day. Parents will drop the children off at the octagon playground. The children will come down the steps and into their classrooms independently. When your child arrives at school, they will have a few simple routine jobs to do to help them settle in for the day. These tasks include putting their book bag into a designated box, placing their water bottle into a tray and then joining in with explore time, a story or singing session. These routines are designed to help your child feel comfortable and prepared for the day ahead.

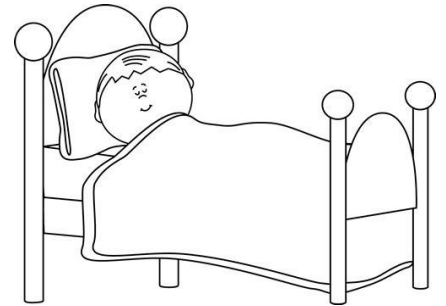
Once you know that your child is happy, we would kindly ask that you leave them promptly to begin the school day. Experience shows us that even when children are a little upset, they quickly settle into this routine. If we have any concerns about how well they are settling, we will talk to you about this.

End of The School Day

Please wait on the octagon playground to collect your child. We will see which parents /carers are waiting and bring each child out in turn. We will be available to talk once the children are dismissed so please feel free to wait around in the playground. As a reminder, the grassy area by the school's boundaries is an out of bounds area that should not be walked on; please keep to the designated paths and playground.

Sleep

By the time children are four years old the NHS says they need **at least 11 and a half hours sleep a night**. This will be especially important when they start school. Time at school will be tiring as the children are constantly learning and remembering new things e.g. names, where to find things, school rules etc. Children who come to school refreshed and well rested are more ready to learn new things and will be more resilient to new challenges.



Reading

Sharing books with your child is very important. If you have not already done so, please consider joining a public library. When the children are settled we will begin sending home school reading books and a reading diary.

Reading is the key focus for home learning. We strongly recommend that you read with your child daily. This may be a story at bed time, a story during breakfast or a made up story on your journey into school.

Please make sure your child keeps their school reading book and reading diary in their book bag **every day**.

The school reading book will have a white label saying: '*I can read this book myself*'. This book will be matched to your child's phonics assessment. It will be changed by a teacher in school once a week.

There will be additional books in your child's book bag for further reading practice. These reading books are closely linked to your child's phonics knowledge but not from our specific phonics reading scheme (Read, Write Inc). You may need to support your child when reading these books. Hopefully, you can enjoy reading them together.

Letter formation

When learning to write the children will be taught to start all lower case letters on the line. We then begin cursive (joined up) writing when they are ready for this next stage in their development, this usually happens at the end of Year 1 or in Year 2.

Non-cursive:

a b c d e f g h i j k l m n o p q r s t u v w x y z

Cursive:

a b c d e f g h i j k l m n o p q r s t u v w x y z

In September, you will receive further support and information with your child's letter formation.

Number formation

Children will be taught to write numbers like this:

0 1 2 3 4 5 6 7 8 9

Parent / carer helpers or volunteers

Helpers are most welcome in school. They must have a Disclosure and Barring Service (DBS) check. Please speak to a member of the school office for further details.

Home School Partnership Meetings

You will have the opportunity to meet formally with your child's class teacher at least twice during the year. However, we have an open door policy so if you require additional meetings please speak to your child's class teacher to arrange this.

What can I do over the summer to help my child be ready for school?

During the summer you can help your child most by talking positively with them about starting school. Children take their lead from the adults around them so

if you are talking about school in a positive way, your children will feel more confident and happy about it.

Here are some suggested ideas to try with your child during the summer. This is not an extensive list and we are not expecting children to be completely independent with these skills straight away.

- Dress myself in the morning, including zipping up coats
- Sing five new nursery rhymes which I have learnt this summer
- Recognise my name when it's on my clothes or toys
- Do something fun with someone who will be in my class
- Visit the library and borrow some books that I haven't read before
- Listen to and retell a favourite bedtime story
- Share and take turns
- Practise using a knife and fork independently

These ideas are a great way to encourage independence as well as helping inspire a love of learning!

We hope you are looking forward to September just as much as we are!

From Miss Robberts and the EYFS team

Mrs Cook

EYFS
Bumblebee Class
Teacher



Miss Yoxon

EYFS
Ladybird Class
Teacher



Miss Robbarts

Year 1 Butterfly Class Teacher
Infant Phase Leader for EYFS, Year 1 and
Year 2 classes



Overview

- Please make sure your child's online 'Data Collection Pupil Registration Form' is completed **as soon as possible.**
- Please bring your child's birth certificate to the school office in **September.** You do not need to leave it with us.
- Please clearly look over and pencil in all diary dates (including the weeks in which September's events will be happening).
- AM and PM sessions will be confirmed once we have decided class lists. Please check the location of drop off and pick up.
- Feel free to use the school's website for further information.
- Please contact the school office if you have any further questions.

Useful websites:

- Starting school
- <https://www.bbc.co.uk/bitesize/groups/cx1lpm3ve37t>
- Read, Write Inc.
<https://home.oxfordowl.co.uk/reading/reading-schemes-oxford-levels/read-write-inc-phonics-guide/>
- How to say the sounds
- <https://www.youtube.com/watch?v=KUbrJPA65g>

Contact Details

Executive Head Teacher: Ms Pearson

Infant Phase Leader: Miss Caroline Robberts

Correspondence address:

Moorlands Schools Federation, Chantry Mead Road, Bath, BA2 2DE






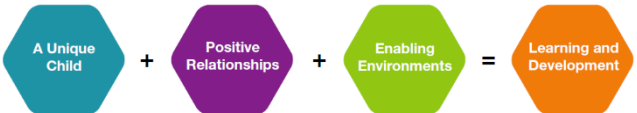
Email: office@moorlands-school.com

Telephone: 01225 421912

Website: <http://moorlands-school.org/>

June 2026



SCHOOL DAY TIMINGS	SCHOOL UNIFORM										
<ul style="list-style-type: none"> Gates and doors open for drop off at 8:35am. The school day starts at 8:45am Gates close at 8:50am. Drop off is in the Octagon playground; children come down the steps independently. Afternoon collection is at 3:15pm. Gates open in the afternoon at 3:10pm. Collection is on the Octagon playground; we will bring out children to meet parents/carers.  	<ul style="list-style-type: none"> Click here to see school uniform information on our website. Green jumper (non-branded is fine and widely available), white polo shirt, black or grey trousers, shorts or skirt, black shoes. On PE days, come to school in PE kit: white T-shirt, black joggers or shorts, school jumper, trainers. The PTA Uniform shop has lots of affordable uniform available. Branded uniform available from https://www.brigade.uk.com  										
LUNCH, DRINKS AND SNACKS	STARTING SCHOOL / ATTENDANCE										
<ul style="list-style-type: none"> Your child can bring in a snack. In order to make this as simple as possible, we request that the snacks are a single piece of fruit or vegetable such as: apple, carrot, banana, orange, cucumber, tomatoes or peppers. Lunches are provided by our outsourced catering provider. Your child is entitled to free school meals until Year 2. Please provide your child with a labelled water bottle. 	<ul style="list-style-type: none"> If your child cannot attend school, notify the school by telephone. Holidays shouldn't be taken during term time  <table border="1" data-bbox="938 683 1348 828"> <tr> <td>97% - 100%</td> <td>Excellent Attendance</td> </tr> <tr> <td>96% - 96.9%</td> <td>Expected Attendance</td> </tr> <tr> <td>94% - 95.9%</td> <td>Falling Below Expected</td> </tr> <tr> <td>90.1% - 93.9%</td> <td>Below Expected</td> </tr> <tr> <td>90% or below</td> <td>Persistent Absence</td> </tr> </table>	97% - 100%	Excellent Attendance	96% - 96.9%	Expected Attendance	94% - 95.9%	Falling Below Expected	90.1% - 93.9%	Below Expected	90% or below	Persistent Absence
97% - 100%	Excellent Attendance										
96% - 96.9%	Expected Attendance										
94% - 95.9%	Falling Below Expected										
90.1% - 93.9%	Below Expected										
90% or below	Persistent Absence										
EYFS TEAM											
<ul style="list-style-type: none"> Our reception classes are called Ladybirds and Bumblebees, each with two key people - a teacher and at least one teaching assistant. You will be notified of your child's key people and class before the summer holidays. 											
LEARNING AND DEVELOPMENT											
<ul style="list-style-type: none"> Communication and Language Physical Development Personal, Social and Emotional Development Literacy Mathematics Understanding the World Expressive Arts and Design 	<ul style="list-style-type: none"> These 7 areas of learning will underpin your child's education. At the end of the Foundation Stage, teachers will assess your child's attainment against the Early Learning Goals which are directly linked to the 7 areas of learning and development. The end of year assessment is called the Early Years Foundation Stage Profile (EYFSP). 										
SUPPORTING YOUR CHILD OVER SUMMER	EXTRA THINGS TO HAVE IN SCHOOL										
<p>Things for your child to try:</p> <ul style="list-style-type: none"> Dress myself in the morning, including zipping up coats Sing five new nursery rhymes which I have learnt this summer Recognise my name when it's on my clothes or toys Do something fun with someone who will be in my class Visit the library and borrow some books that I haven't read before Listen to and retell a favourite bedtime story Share and take turns Practise using a knife and fork independently 	<ul style="list-style-type: none"> Please label all clothes including coats, bags and water bottles with labels that don't wash off. All children should bring in spare clothes/uniform in a waterproof bag to change into every day for the first term. Even if children are toilet trained, they can still fall in a muddy puddle or have a messy water play session during the day. We are always grateful for good quality clean pants and sock donations! We celebrate birthdays at Moorlands by wearing 'comfortable home clothes' on the day of or nearest day to a birthday. Please do not bring in cake, sweets or stickers etc. 										